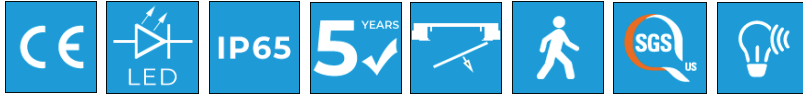


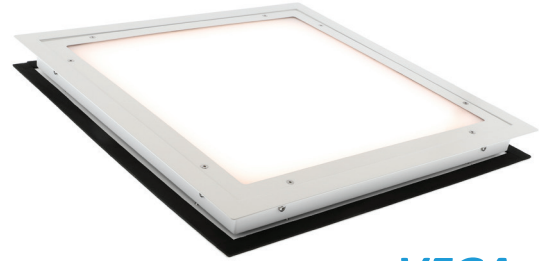
# VEGA - 50mm 31w

LWOBA50-31w Bottom Access Walk-On Cleanroom Luminaire



## Overview

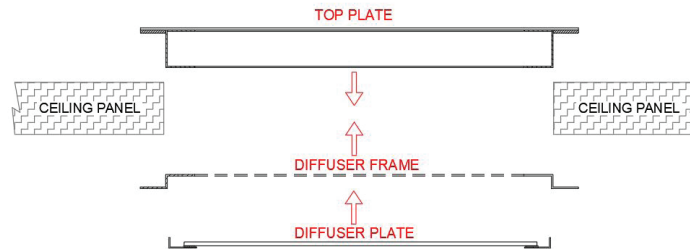
A flush, recessed ceiling-mounted LED luminaire for installation in 50mm cleanroom ceiling (or wall) panels. The fitting is IP65 rated and suitable for walk-on loads of up to 2.5kN/m<sup>2</sup>. The removable reinforced top plate allows both walk-on capability and top access for maintenance, while maintaining the cleanroom integrity. The luminaire is available in DALI dimmable.



**VEGA**  
Bottom Access Version

## Installation

The fitting is inserted into the aperture in the cleanroom ceiling, and the flanges on the fitting sandwich the ceiling parts fixing it into position. The fitting can be installed from the cleanroom side. The outer frames are then silicone sealed along the boundaries with the ceiling panel.



| Electrical Data: |         |
|------------------|---------|
| Voltage (V)      | 220-240 |
| Frequency (Hz)   | 50      |
| Power (W)        | 31      |
| Power Factor     | 0.95    |
| Total Power (W)  | 37      |

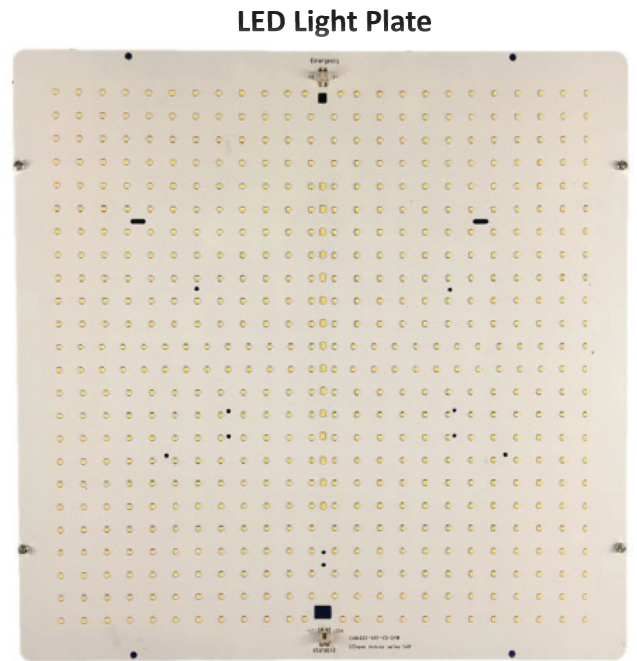
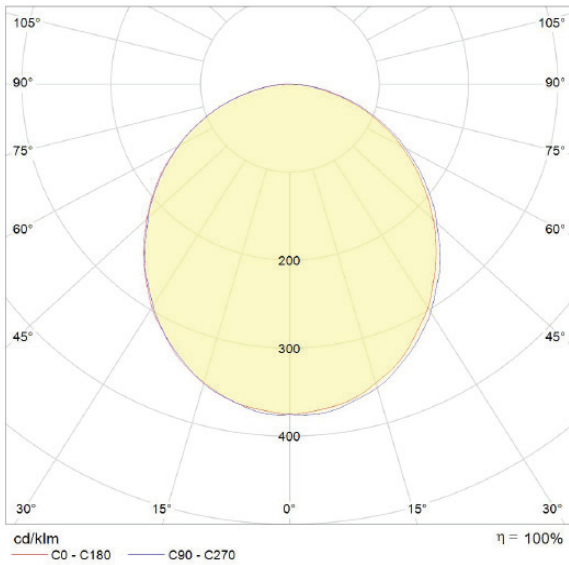
| Dimensions:        |         |
|--------------------|---------|
| Length (mm)        | 610     |
| Width (mm)         | 610     |
| Height (mm)        | 65      |
| Ope Dimension (mm) | 565x565 |
| Weight (kg)        | 14.5    |

| Lighting Data:  |                          |
|-----------------|--------------------------|
| LED Type        | Everlight                |
| Luminous Flux   | 3600lm                   |
| CCT             | 4000K                    |
| CRI             | >80                      |
| Efficacy        | 120lm/cw                 |
| Life Expectancy | >70,000hrs               |
| Macadam Step    | 3                        |
| Driver          | Tridonic Advanced Series |

| Body / Diffuser: |                           |
|------------------|---------------------------|
| Body Material    | Sheet Steel               |
| Body Finish      | Powder coated Epoxy Paint |
| Body Colour      | RAL 9010                  |
| Diffuser         | 3mm TP (a) Polycarbonate  |
| Cable Tail Lead  | 3m PVC/PVC                |

| Technical Data: |                      |
|-----------------|----------------------|
| IP Rating       | IP65                 |
| Max T (a)       | 35                   |
| Walk-on Loading | 2.5kN/m <sup>2</sup> |
| Temp Range      | -20°C to + 40°C      |
| Gland position  | Top/Rear             |

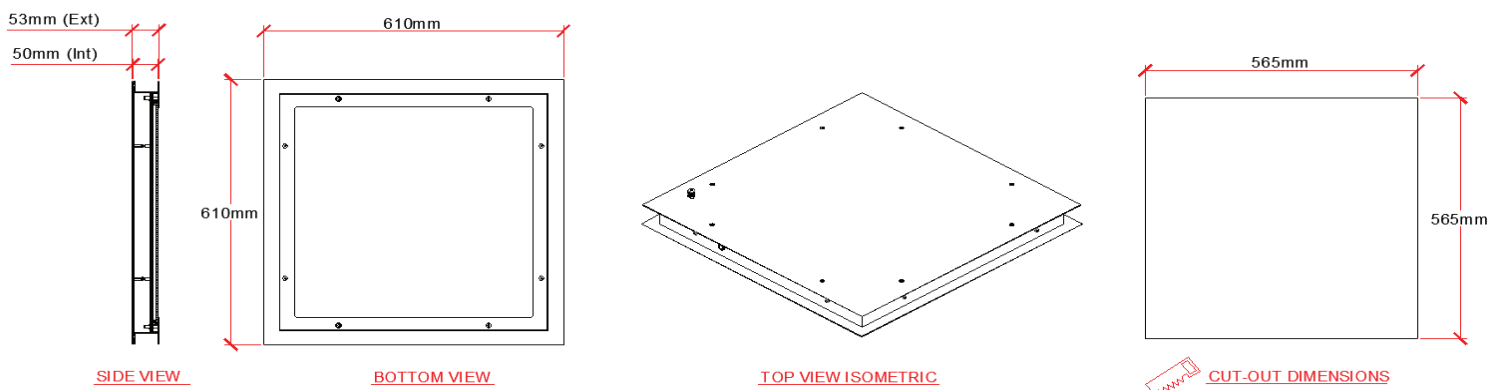
| Options:                |                              |
|-------------------------|------------------------------|
| DALI Dimmable           | Yes, on request              |
| Emergency               | Yes, Integrated 4W LED strip |
| Self/Auto Test (Emer.)  | Yes, on request              |
| Diffuser Option         | Toughened Glass option       |
| Cable Tail Lead options | Yes, on request              |
| Gland Position Options  | Side entry options           |
| Low UV / Amber          | Yes, inc dual option         |
| Smart Lighting options  | Yes, on request              |



**To Specify:**

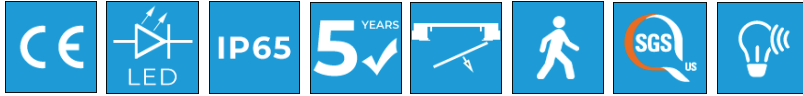
Recessed, IP65, Walk-on LED Cleanroom Luminaire with steel body, SMD LEDs, Tridonic Driver and chemical resistant polycarbonate diffuser, suitable for installation in 50mm controlled environment panel ceilings. The luminaire is 'Bottom Access' only and suitable for the highest grades of cleanroom.

**Drawings**



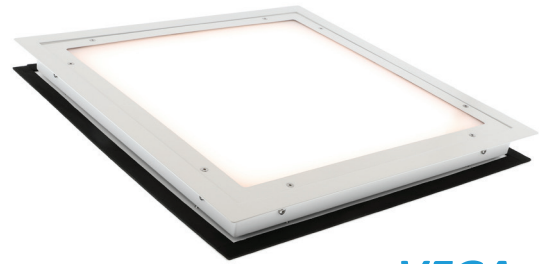
# VEGA - 50mm 42w

LWOBA50-42w Bottom Access Walk-On Cleanroom Luminaire



## Overview

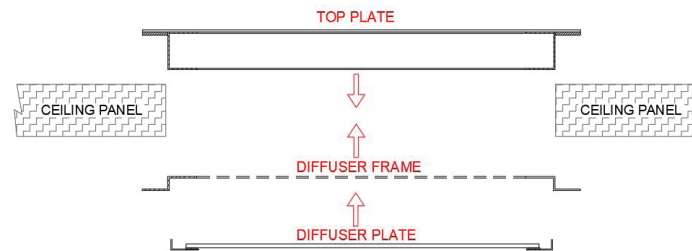
A flush, recessed ceiling-mounted LED luminaire for installation in 50mm cleanroom ceiling (or wall) panels. The fitting is IP65 rated and suitable for walk-on loads of up to 2.5kN/m<sup>2</sup>. The removable reinforced top plate allows both walk-on capability and top access for maintenance, while maintaining the cleanroom integrity. The luminaire is available in DALI dimmable.



**VEGA**  
Bottom Access Version

## Installation

The fitting is inserted into the aperture in the cleanroom ceiling, and the flanges on the fitting sandwich the ceiling parts fixing it into position. The fitting can be installed from the cleanroom side. The outer frames are then silicone sealed along the boundaries with the ceiling panel.



| Electrical Data: |         |
|------------------|---------|
| Voltage (V)      | 220-240 |
| Frequency (Hz)   | 50      |
| Power (W)        | 42      |
| Power Factor     | 0.95    |
| Total Power (W)  | 47      |

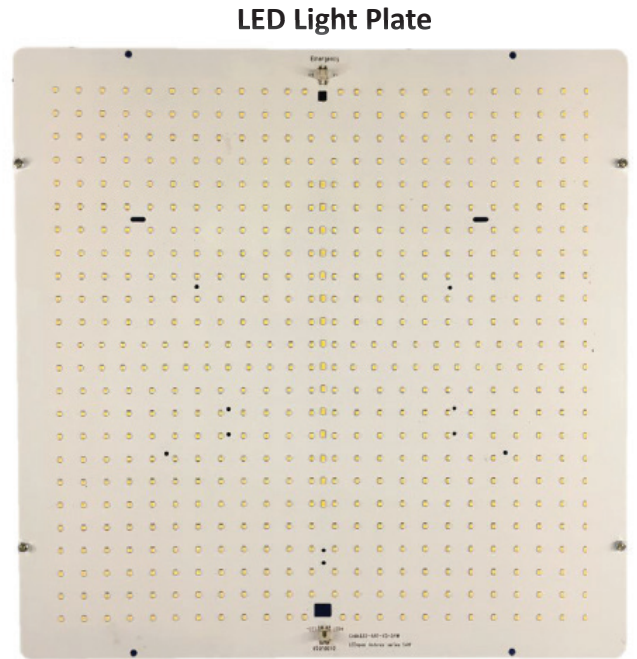
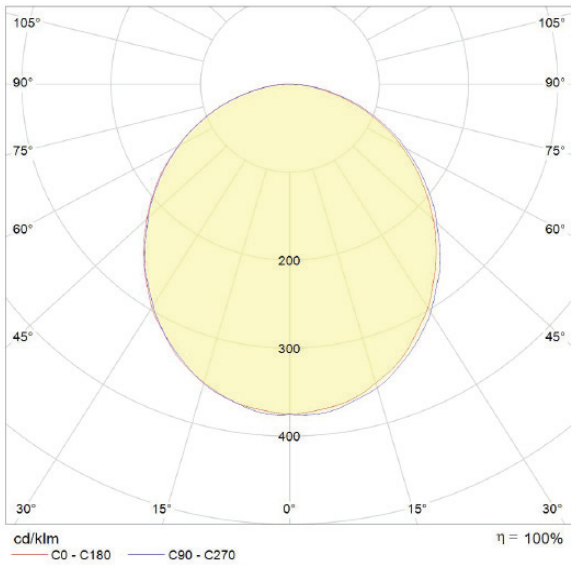
| Dimensions:        |         |
|--------------------|---------|
| Length (mm)        | 610     |
| Width (mm)         | 610     |
| Height (mm)        | 65      |
| Ope Dimension (mm) | 565x565 |
| Weight (kg)        | 14.5    |

| Lighting Data:  |                          |
|-----------------|--------------------------|
| LED Type        | Everlight                |
| Luminous Flux   | 5040lm                   |
| CCT             | 4000K                    |
| CRI             | >80                      |
| Efficacy        | 120lm/cw                 |
| Life Expectancy | >70,000hrs               |
| Macadam Step    | 3                        |
| Driver          | Tridonic Advanced Series |

| Body / Diffuser: |                           |
|------------------|---------------------------|
| Body Material    | Sheet Steel               |
| Body Finish      | Powder coated Epoxy Paint |
| Body Colour      | RAL 9010                  |
| Diffuser         | 3mm TP (a) Polycarbonate  |
| Cable Tail Lead  | 3m PVC/PVC                |

| Technical Data: |                      |
|-----------------|----------------------|
| IP Rating       | IP65                 |
| Max T (a)       | 35                   |
| Walk-on Loading | 2.5kN/m <sup>2</sup> |
| Temp Range      | -20°C to + 40°C      |
| Gland position  | Top/Rear             |

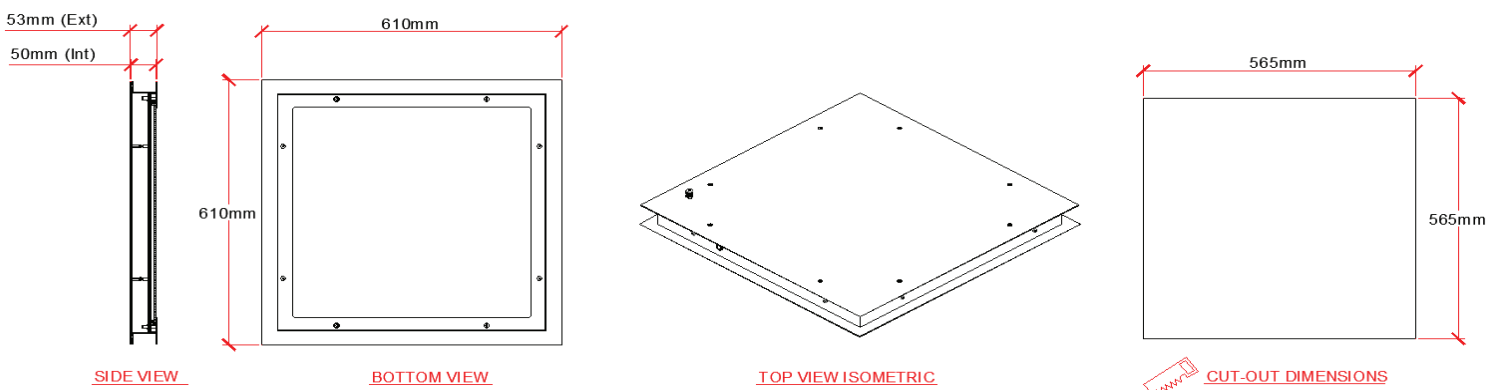
| Options:                |                              |
|-------------------------|------------------------------|
| DALI Dimmable           | Yes, on request              |
| Emergency               | Yes, Integrated 4W LED strip |
| Self/Auto Test (Emer.)  | Yes, on request              |
| Diffuser Option         | Toughened Glass option       |
| Cable Tail Lead options | Yes, on request              |
| Gland Position Options  | Side entry options           |
| Low UV / Amber          | Yes, inc dual option         |
| Smart Lighting options  | Yes, on request              |



**To Specify:**

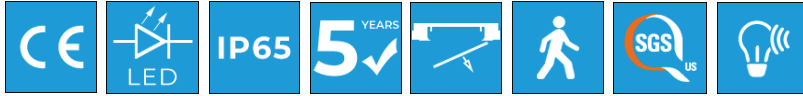
Recessed, IP65, Walk-on LED Cleanroom Luminaire with steel body, SMD LEDs, Tridonic Driver and chemical resistant polycarbonate diffuser, suitable for installation in 50mm controlled environment panel ceilings. The luminaire is 'Bottom Access' only and suitable for the highest grades of cleanroom.

**Drawings**



# VEGA - 50mm 70w

LWOBA50-70w Bottom Access Walk-On Cleanroom Luminaire

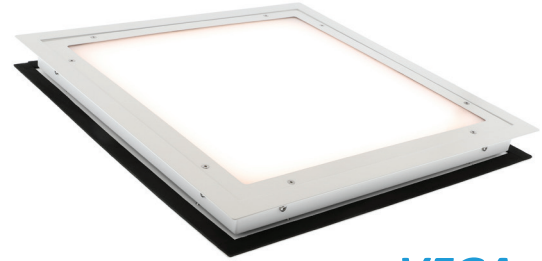


## Overview

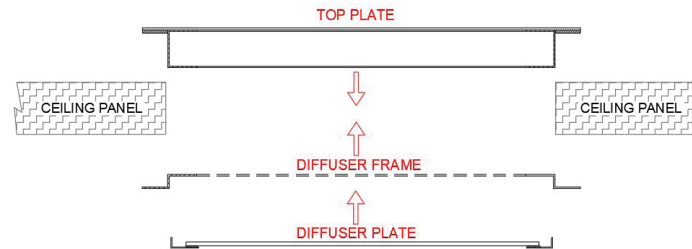
A flush, recessed ceiling-mounted LED luminaire for installation in 50mm cleanroom ceiling (or wall) panels. The fitting is IP65 rated and suitable for walk-on loads of up to 2.5kN/m<sup>2</sup>. The removable reinforced top plate allows both walk-on capability and top access for maintenance, while maintaining the cleanroom integrity. The luminaire is available in DALI dimmable.

## Installation

The fitting is inserted into the aperture in the cleanroom ceiling, and the flanges on the fitting sandwich the ceiling parts fixing it into position. The fitting can be installed from the cleanroom side. The outer frames are then silicone sealed along the boundaries with the ceiling panel.



**VEGA**  
Bottom Access Version



| Electrical Data: |         |
|------------------|---------|
| Voltage (V)      | 220-240 |
| Frequency (Hz)   | 50      |
| Power (W)        | 70      |
| Power Factor     | 0.95    |
| Total Power (W)  | 76      |

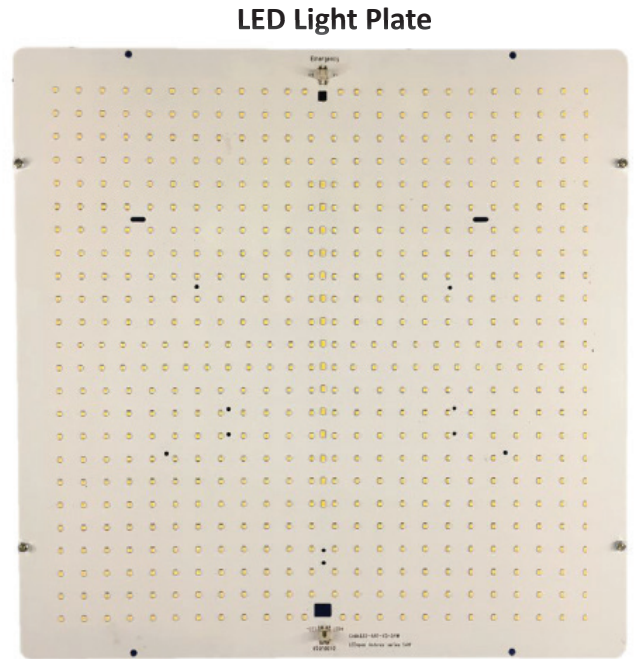
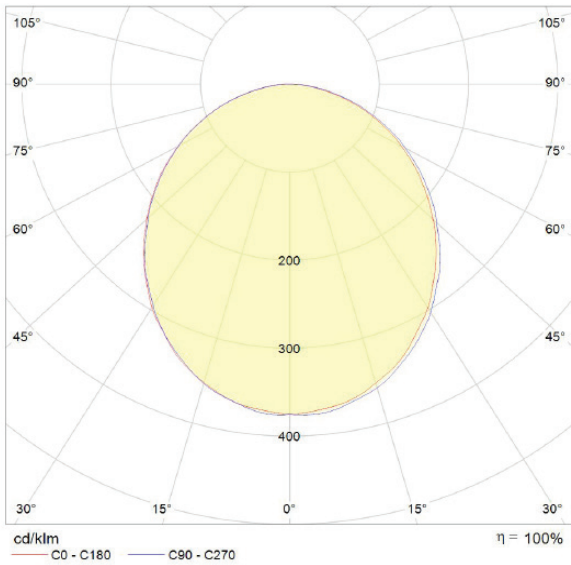
| Dimensions:        |         |
|--------------------|---------|
| Length (mm)        | 610     |
| Width (mm)         | 610     |
| Height (mm)        | 65      |
| Ope Dimension (mm) | 565x565 |
| Weight (kg)        | 14.5    |

| Lighting Data:  |            |
|-----------------|------------|
| LED Type        | Everlight  |
| Luminous Flux   | 8400lm     |
| CCT             | 4000K      |
| CRI             | >80        |
| Efficacy        | 120lm/cw   |
| Life Expectancy | >70,000hrs |
| Macadam Step    | 3          |

| Body / Diffuser: |                           |
|------------------|---------------------------|
| Body Material    | Sheet Steel               |
| Body Finish      | Powder coated Epoxy Paint |
| Body Colour      | RAL 9010                  |
| Diffuser         | 3mm TP (a) Polycarbonate  |
| Cable Tail Lead  | 3m PVC/PVC                |

| Technical Data: |                      |
|-----------------|----------------------|
| IP Rating       | IP65                 |
| Max T (a)       | 35                   |
| Walk-on Loading | 2.5kN/m <sup>2</sup> |
| Temp Range      | -20°C to + 40°C      |
| Gland position  | Top/Rear             |

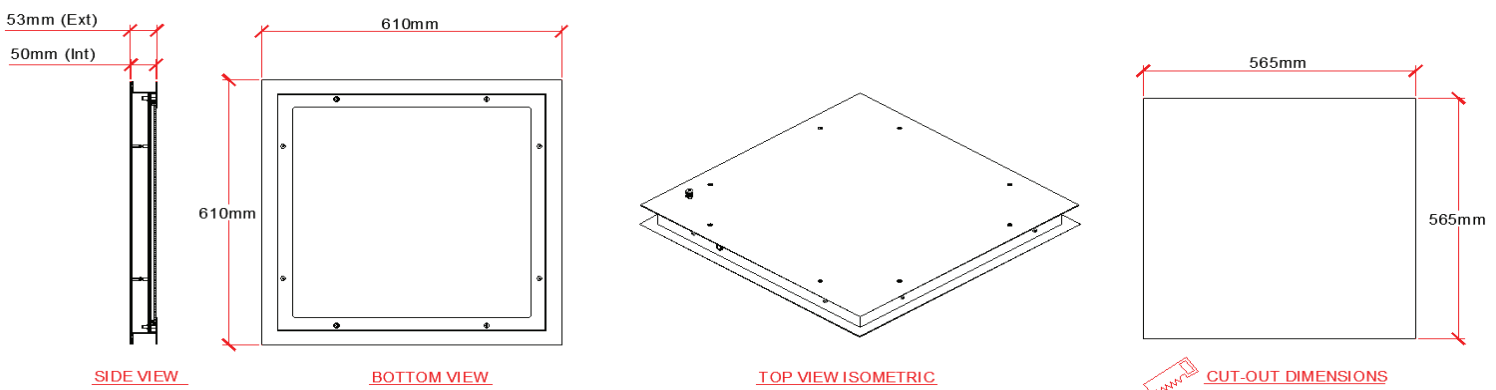
| Options:                |                              |
|-------------------------|------------------------------|
| DALI Dimmable           | Yes, on request              |
| Emergency               | Yes, Integrated 4W LED strip |
| Self/Auto Test (Emer.)  | Yes, on request              |
| Diffuser Option         | Toughened Glass option       |
| Cable Tail Lead options | Yes, on request              |
| Gland Position Options  | Side entry options           |
| Low UV / Amber          | Yes, inc dual option         |
| Smart Lighting options  | Yes, on request              |



**To Specify:**

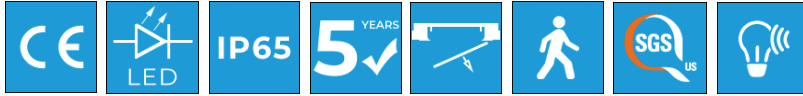
Recessed, IP65, Walk-on LED Cleanroom Luminaire with steel body, SMD LEDs, Tridonic Driver and chemical resistant polycarbonate diffuser, suitable for installation in 50mm controlled environment panel ceilings. The luminaire is 'Bottom Access' only and suitable for the highest grades of cleanroom.

**Drawings**



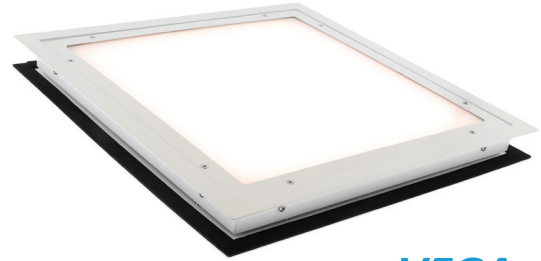
# VEGA - 50mm 54w

LWOBA50-54w Bottom Access Walk-On Cleanroom Luminaire



## Overview

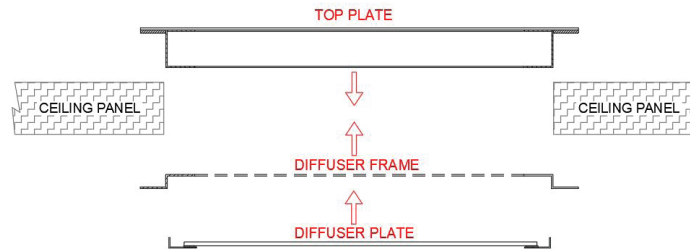
A flush, recessed ceiling-mounted LED luminaire for installation in 50mm cleanroom ceiling (or wall) panels. The fitting is IP65 rated and suitable for walk-on loads of up to 2.5kN/m<sup>2</sup>. The removable reinforced top plate allows both walk-on capability and top access for maintenance, while maintaining the cleanroom integrity. The luminaire is available in DALI dimmable.



**VEGA**  
Bottom Access Version

## Installation

The fitting is inserted into the aperture in the cleanroom ceiling, and the flanges on the fitting sandwich the ceiling parts fixing it into position. The fitting can be installed from the cleanroom side. The outer frames are then silicone sealed along the boundaries with the ceiling panel.



| Electrical Data: |         |
|------------------|---------|
| Voltage (V)      | 220-240 |
| Frequency (Hz)   | 50      |
| Power (W)        | 54      |
| Power Factor     | 0.95    |
| Total Power (W)  | 58      |

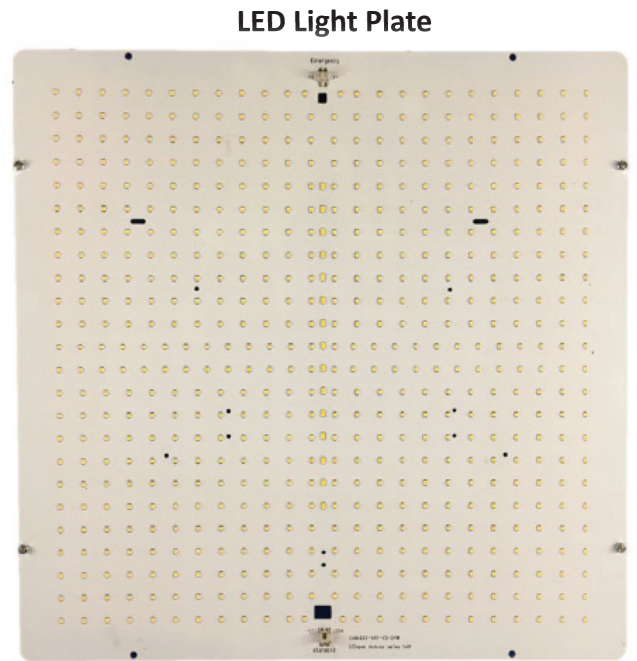
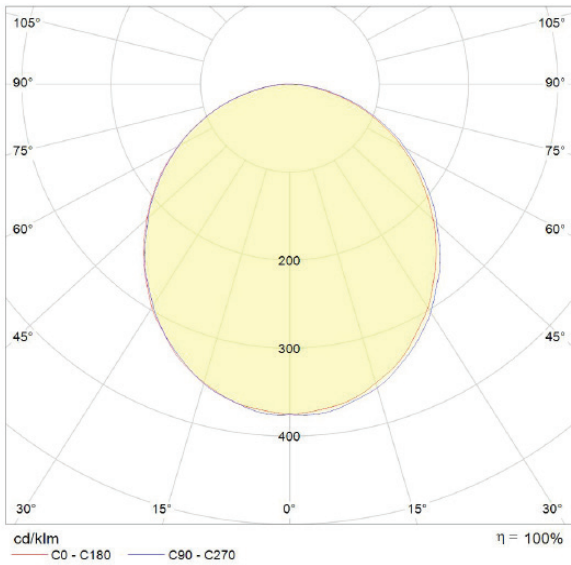
| Dimensions:        |         |
|--------------------|---------|
| Length (mm)        | 610     |
| Width (mm)         | 610     |
| Height (mm)        | 65      |
| Ope Dimension (mm) | 565x565 |
| Weight (kg)        | 14.5    |

| Lighting Data:  |                          |
|-----------------|--------------------------|
| LED Type        | Everlight                |
| Luminous Flux   | 6480lm                   |
| CCT             | 4000K                    |
| CRI             | >80                      |
| Efficacy        | 120lm/cw                 |
| Life Expectancy | >70,000hrs               |
| Macadam Step    | 3                        |
| Driver          | Tridonic Advanced Series |

| Body / Diffuser: |                           |
|------------------|---------------------------|
| Body Material    | Sheet Steel               |
| Body Finish      | Powder coated Epoxy Paint |
| Body Colour      | RAL 9010                  |
| Diffuser         | 3mm TP (a) Polycarbonate  |
| Cable Tail Lead  | 3m PVC/PVC                |

| Technical Data: |                      |
|-----------------|----------------------|
| IP Rating       | IP65                 |
| Max T (a)       | 35                   |
| Walk-on Loading | 2.5kN/m <sup>2</sup> |
| Temp Range      | -20°C to + 40°C      |
| Gland position  | Top/Rear             |

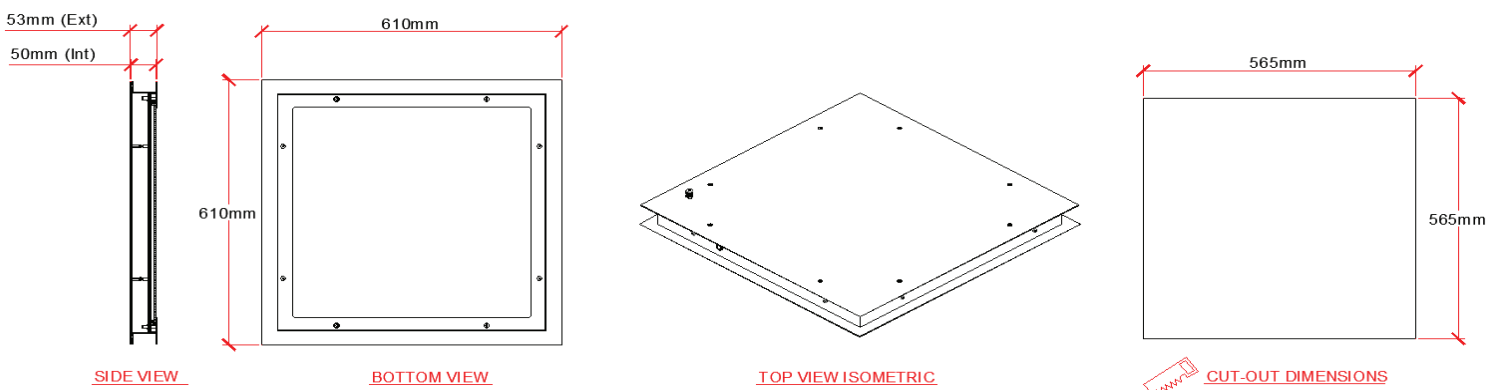
| Options:                |                              |
|-------------------------|------------------------------|
| DALI Dimmable           | Yes, on request              |
| Emergency               | Yes, Integrated 4W LED strip |
| Self/Auto Test (Emer.)  | Yes, on request              |
| Diffuser Option         | Toughened Glass option       |
| Cable Tail Lead options | Yes, on request              |
| Gland Position Options  | Side entry options           |
| Low UV / Amber          | Yes, inc dual option         |
| Smart Lighting options  | Yes, on request              |



**To Specify:**

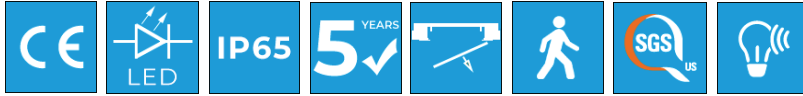
Recessed, IP65, Walk-on LED Cleanroom Luminaire with steel body, SMD LEDs, Tridonic Driver and chemical resistant polycarbonate diffuser, suitable for installation in 50mm controlled environment panel ceilings. The luminaire is 'Bottom Access' only and suitable for the highest grades of cleanroom.

**Drawings**



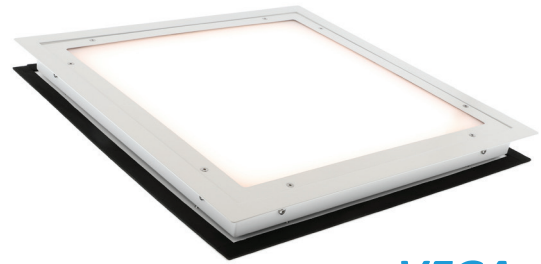
# VEGA - 65mm 31w

LWOBA65-31w Bottom Access Walk-On Cleanroom Luminaire



## Overview

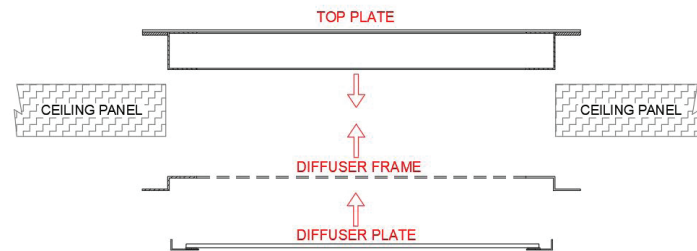
A flush, recessed ceiling-mounted LED luminaire for installation in 65mm cleanroom ceiling (or wall) panels. The fitting is IP65 rated and suitable for walk-on loads of up to 2.5kN/m<sup>2</sup>. The removable reinforced top plate allows both walk-on capability and top access for maintenance, while maintaining the cleanroom integrity. The luminaire is available in DALI dimmable.



**VEGA**  
Bottom Access Version

## Installation

The fitting is inserted into the aperture in the cleanroom ceiling, and the flanges on the fitting sandwich the ceiling parts fixing it into position. The fitting can be installed from the cleanroom side. The outer frames are then silicone sealed along the boundaries with the ceiling panel.



| Electrical Data: |         |
|------------------|---------|
| Voltage (V)      | 220-240 |
| Frequency (Hz)   | 50      |
| Power (W)        | 31      |
| Power Factor     | 0.95    |
| Total Power (W)  | 37      |

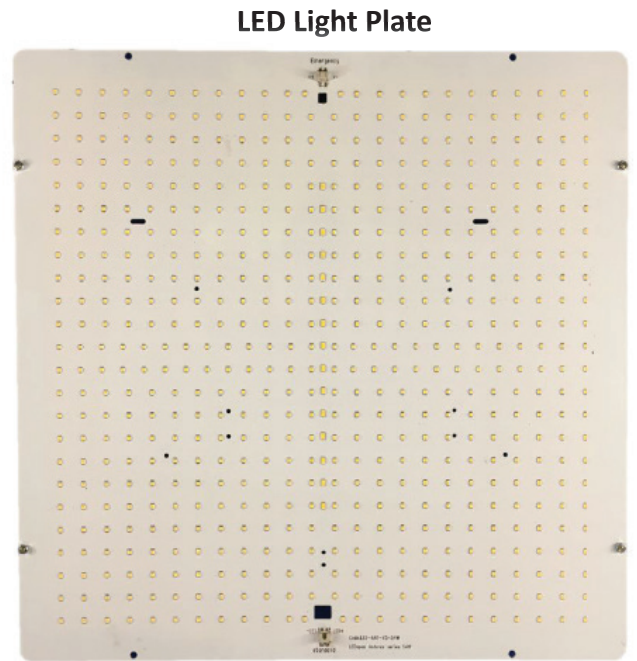
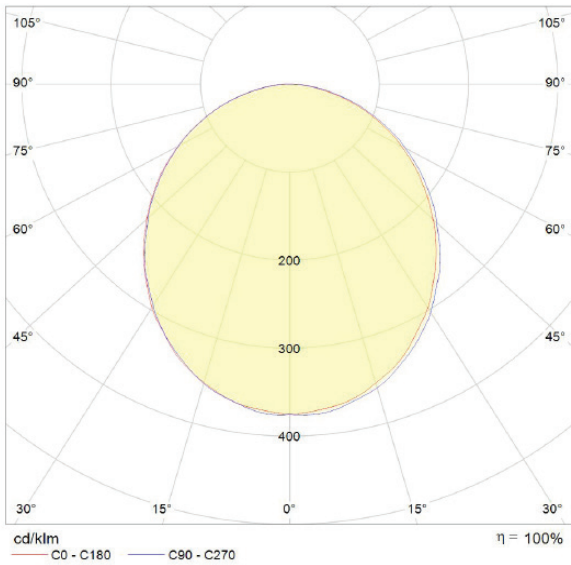
| Dimensions:        |         |
|--------------------|---------|
| Length (mm)        | 610     |
| Width (mm)         | 610     |
| Height (mm)        | 65      |
| Ope Dimension (mm) | 565x565 |
| Weight (kg)        | 14.5    |

| Lighting Data:  |                          |
|-----------------|--------------------------|
| LED Type        | Everlight                |
| Luminous Flux   | 3600lm                   |
| CCT             | 4000K                    |
| CRI             | >80                      |
| Efficacy        | 120lm/cw                 |
| Life Expectancy | >70,000hrs               |
| Macadam Step    | 3                        |
| Driver          | Tridonic Advanced Series |

| Body / Diffuser: |                           |
|------------------|---------------------------|
| Body Material    | Sheet Steel               |
| Body Finish      | Powder coated Epoxy Paint |
| Body Colour      | RAL 9010                  |
| Diffuser         | 3mm TP (a) Polycarbonate  |
| Cable Tail Lead  | 3m PVC/PVC                |

| Technical Data: |                      |
|-----------------|----------------------|
| IP Rating       | IP65                 |
| Max T (a)       | 35                   |
| Walk-on Loading | 2.5kN/m <sup>2</sup> |
| Temp Range      | -20°C to + 40°C      |
| Gland position  | Top/Rear             |

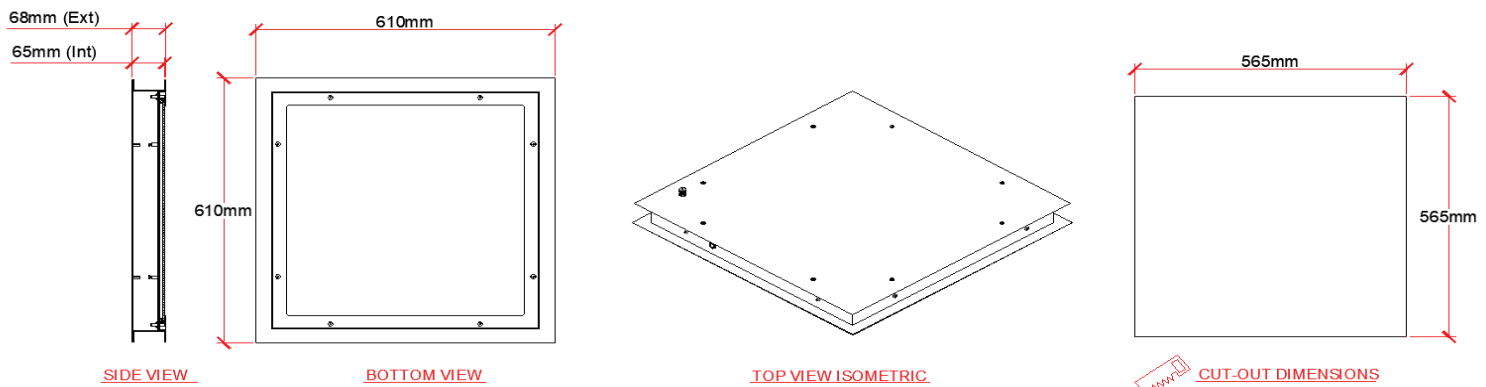
| Options:                |                              |
|-------------------------|------------------------------|
| DALI Dimmable           | Yes, on request              |
| Emergency               | Yes, Integrated 4W LED strip |
| Self/Auto Test (Emer.)  | Yes, on request              |
| Diffuser Option         | Toughened Glass option       |
| Cable Tail Lead options | Yes, on request              |
| Gland Position Options  | Side entry options           |
| Low UV / Amber          | Yes, inc dual option         |
| Smart Lighting options  | Yes, on request              |



**To Specify:**

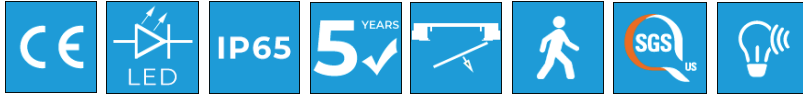
Recessed, IP65, Walk-on LED Cleanroom Luminaire with steel body, SMD LEDs, Tridonic Driver and chemical resistant polycarbonate diffuser, suitable for installation in 65mm controlled environment panel ceilings. The luminaire is 'Bottom Access' only and suitable for the highest grades of cleanroom.

**Drawings**



# VEGA - 65mm 42w

LWOBA65-42w Bottom Access Walk-On Cleanroom Luminaire

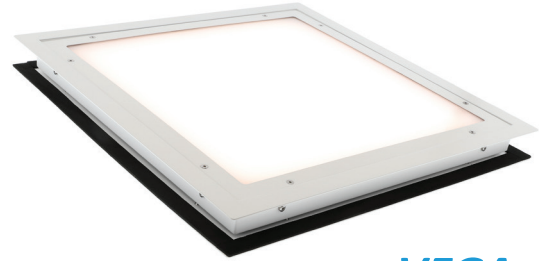


## Overview

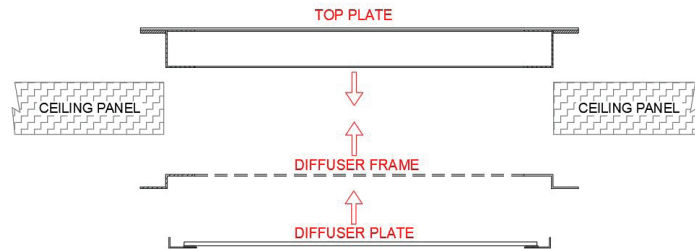
A flush, recessed ceiling-mounted LED luminaire for installation in 65mm cleanroom ceiling (or wall) panels. The fitting is IP65 rated and suitable for walk-on loads of up to 2.5kN/m<sup>2</sup>. The removable reinforced top plate allows both walk-on capability and top access for maintenance, while maintaining the cleanroom integrity. The luminaire is available in DALI dimmable.

## Installation

The fitting is inserted into the aperture in the cleanroom ceiling, and the flanges on the fitting sandwich the ceiling parts fixing it into position. The fitting can be installed from the cleanroom side. The outer frames are then silicone sealed along the boundaries with the ceiling panel.



**VEGA**  
Bottom Access Version



| Electrical Data: |         |
|------------------|---------|
| Voltage (V)      | 220-240 |
| Frequency (Hz)   | 50      |
| Power (W)        | 42      |
| Power Factor     | 0.95    |
| Total Power (W)  | 47      |

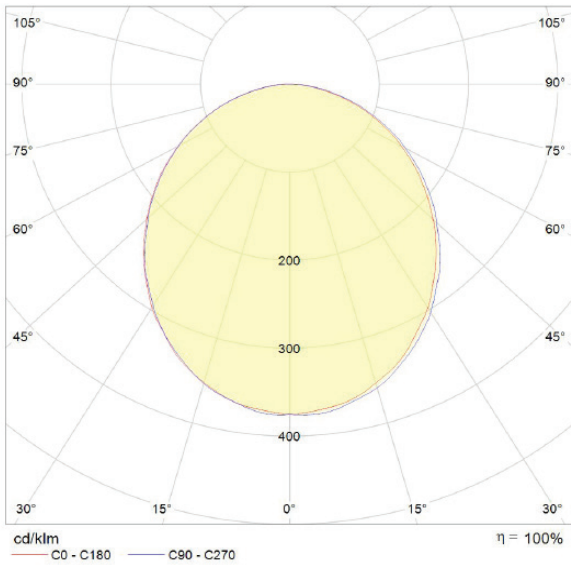
| Dimensions:        |         |
|--------------------|---------|
| Length (mm)        | 610     |
| Width (mm)         | 610     |
| Height (mm)        | 65      |
| Ope Dimension (mm) | 565x565 |
| Weight (kg)        | 14.5    |

| Lighting Data:  |                          |
|-----------------|--------------------------|
| LED Type        | Everlight                |
| Luminous Flux   | 5040lm                   |
| CCT             | 4000K                    |
| CRI             | >80                      |
| Efficacy        | 120lm/cw                 |
| Life Expectancy | >70,000hrs               |
| Macadam Step    | 3                        |
| Driver          | Tridonic Advanced Series |

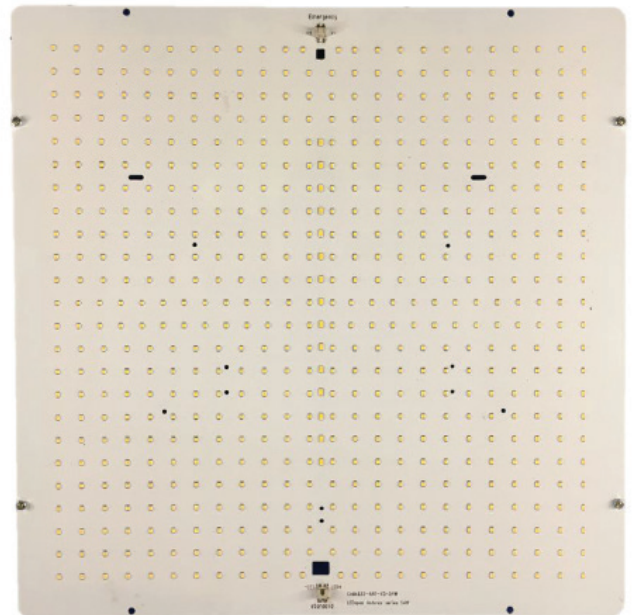
| Body / Diffuser: |                           |
|------------------|---------------------------|
| Body Material    | Sheet Steel               |
| Body Finish      | Powder coated Epoxy Paint |
| Body Colour      | RAL 9010                  |
| Diffuser         | 3mm TP (a) Polycarbonate  |
| Cable Tail Lead  | 3m PVC/PVC                |

| Technical Data: |                      |
|-----------------|----------------------|
| IP Rating       | IP65                 |
| Max T (a)       | 35                   |
| Walk-on Loading | 2.5kN/m <sup>2</sup> |
| Temp Range      | -20°C to + 40°C      |
| Gland position  | Top/Rear             |

| Options:                |                              |
|-------------------------|------------------------------|
| DALI Dimmable           | Yes, on request              |
| Emergency               | Yes, Integrated 4W LED strip |
| Self/Auto Test (Emer.)  | Yes, on request              |
| Diffuser Option         | Toughened Glass option       |
| Cable Tail Lead options | Yes, on request              |
| Gland Position Options  | Side entry options           |
| Low UV / Amber          | Yes, inc dual option         |
| Smart Lighting options  | Yes, on request              |



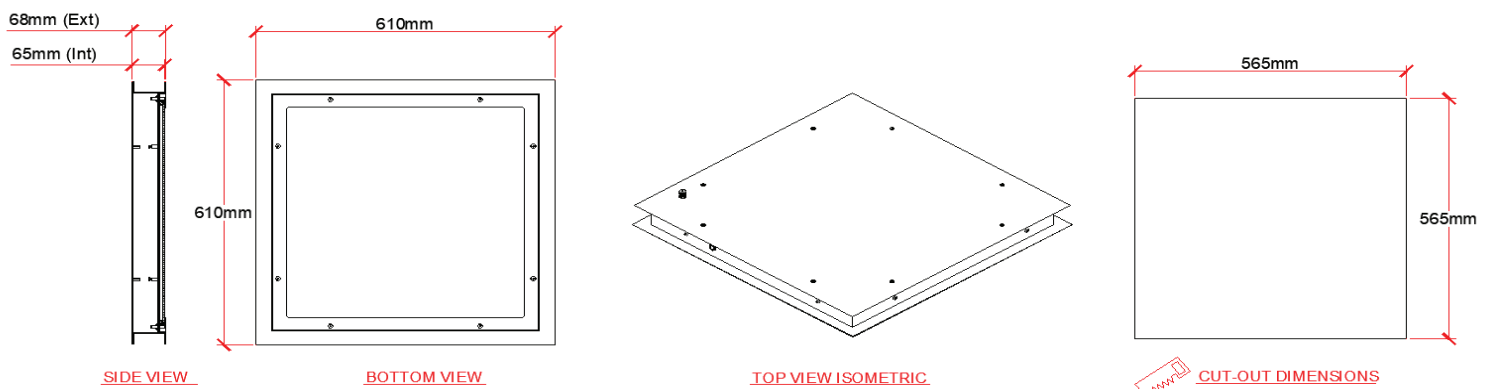
**LED Light Plate**



**To Specify:**

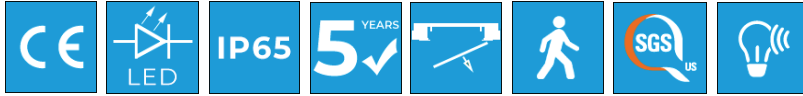
Recessed, IP65, Walk-on LED Cleanroom Luminaire with steel body, SMD LEDs, Tridonic Driver and chemical resistant polycarbonate diffuser, suitable for installation in 65mm controlled environment panel ceilings. The luminaire is 'Bottom Access' only and suitable for the highest grades of cleanroom.

**Drawings**



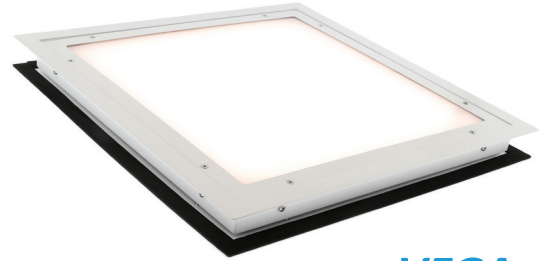
# VEGA - 65mm 70w

LWOBA65-70w Bottom Access Walk-On Cleanroom Luminaire



## Overview

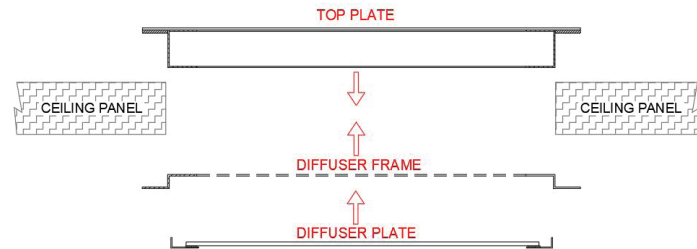
A flush, recessed ceiling-mounted LED luminaire for installation in 65mm cleanroom ceiling (or wall) panels. The fitting is IP65 rated and suitable for walk-on loads of up to 2.5kN/m<sup>2</sup>. The removable reinforced top plate allows both walk-on capability and top access for maintenance, while maintaining the cleanroom integrity. The luminaire is available in DALI dimmable.



**VEGA**  
Bottom Access Version

## Installation

The fitting is inserted into the aperture in the cleanroom ceiling, and the flanges on the fitting sandwich the ceiling parts fixing it into position. The fitting can be installed from the cleanroom side. The outer frames are then silicone sealed along the boundaries with the ceiling panel.



| Electrical Data: |         |
|------------------|---------|
| Voltage (V)      | 220-240 |
| Frequency (Hz)   | 50      |
| Power (W)        | 70      |
| Power Factor     | 0.95    |
| Total Power (W)  | 76      |

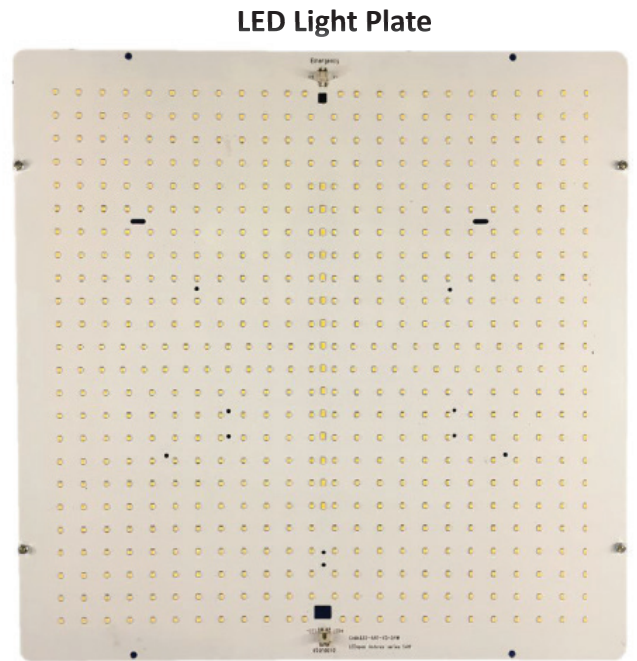
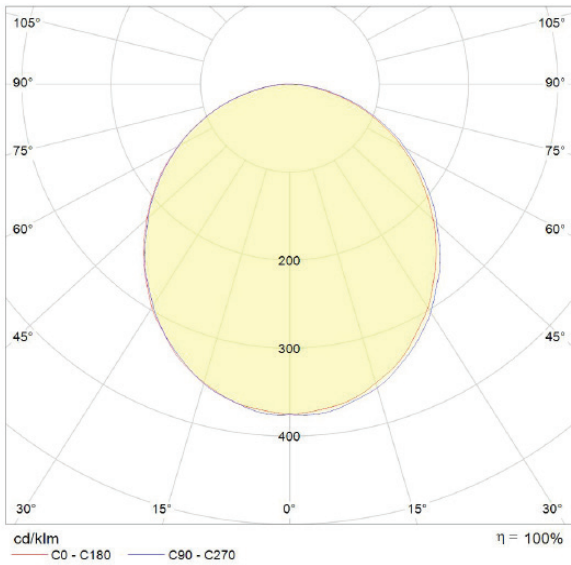
| Dimensions:        |         |
|--------------------|---------|
| Length (mm)        | 610     |
| Width (mm)         | 610     |
| Height (mm)        | 65      |
| Ope Dimension (mm) | 565x565 |
| Weight (kg)        | 14.5    |

| Lighting Data:  |            |
|-----------------|------------|
| LED Type        | Everlight  |
| Luminous Flux   | 8400lm     |
| CCT             | 4000K      |
| CRI             | >80        |
| Efficacy        | 120lm/cw   |
| Life Expectancy | >70,000hrs |
| Macadam Step    | 3          |

| Body / Diffuser: |                           |
|------------------|---------------------------|
| Body Material    | Sheet Steel               |
| Body Finish      | Powder coated Epoxy Paint |
| Body Colour      | RAL 9010                  |
| Diffuser         | 3mm TP (a) Polycarbonate  |
| Cable Tail Lead  | 3m PVC/PVC                |

| Technical Data: |                      |
|-----------------|----------------------|
| IP Rating       | IP65                 |
| Max T (a)       | 35                   |
| Walk-on Loading | 2.5kN/m <sup>2</sup> |
| Temp Range      | -20°C to + 40°C      |
| Gland position  | Top/Rear             |

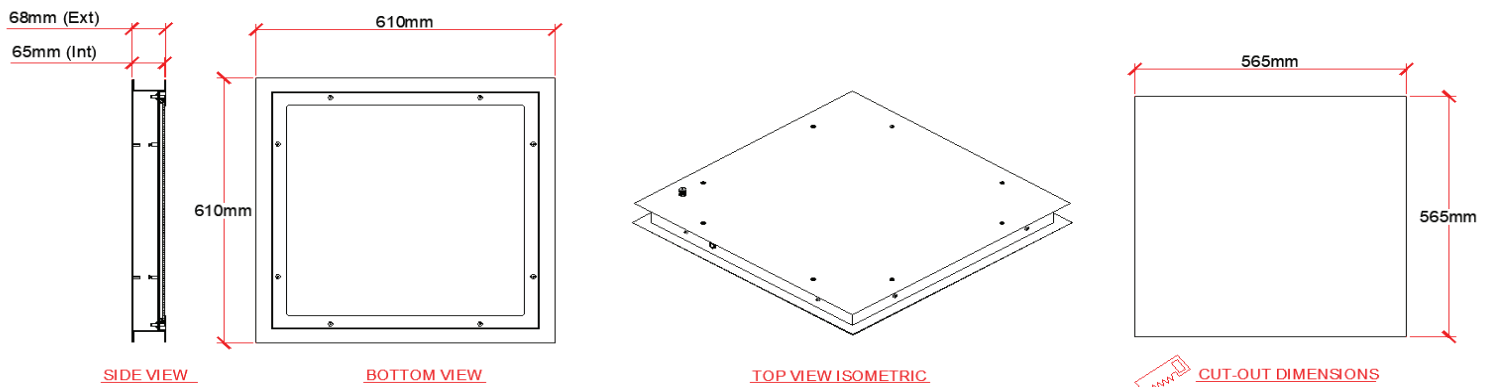
| Options:                |                              |
|-------------------------|------------------------------|
| DALI Dimmable           | Yes, on request              |
| Emergency               | Yes, Integrated 4W LED strip |
| Self/Auto Test (Emer.)  | Yes, on request              |
| Diffuser Option         | Toughened Glass option       |
| Cable Tail Lead options | Yes, on request              |
| Gland Position Options  | Side entry options           |
| Low UV / Amber          | Yes, inc dual option         |
| Smart Lighting options  | Yes, on request              |



**To Specify:**

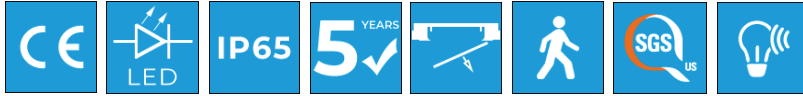
Recessed, IP65, Walk-on LED Cleanroom Luminaire with steel body, SMD LEDs, Tridonic Driver and chemical resistant polycarbonate diffuser, suitable for installation in 65mm controlled environment panel ceilings. The luminaire is 'Bottom Access' only and suitable for the highest grades of cleanroom.

**Drawings**



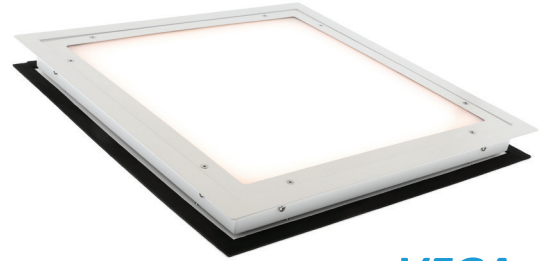
# VEGA - 65mm 54w

LWOBA65-54w Bottom Access Walk-On Cleanroom Luminaire



## Overview

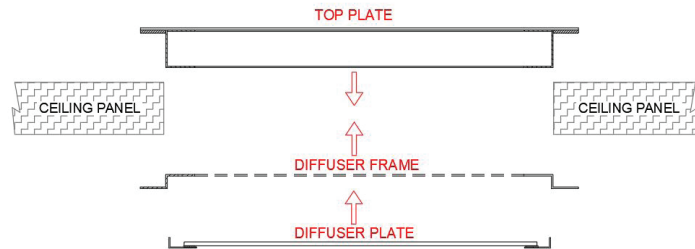
A flush, recessed ceiling-mounted LED luminaire for installation in 65mm cleanroom ceiling (or wall) panels. The fitting is IP65 rated and suitable for walk-on loads of up to 2.5kN/m<sup>2</sup>. The removable reinforced top plate allows both walk-on capability and top access for maintenance, while maintaining the cleanroom integrity. The luminaire is available in DALI dimmable.



**VEGA**  
Bottom Access Version

## Installation

The fitting is inserted into the aperture in the cleanroom ceiling, and the flanges on the fitting sandwich the ceiling parts fixing it into position. The fitting can be installed from the cleanroom side. The outer frames are then silicone sealed along the boundaries with the ceiling panel.



| Electrical Data: |         |
|------------------|---------|
| Voltage (V)      | 220-240 |
| Frequency (Hz)   | 50      |
| Power (W)        | 54      |
| Power Factor     | 0.95    |
| Total Power (W)  | 58      |

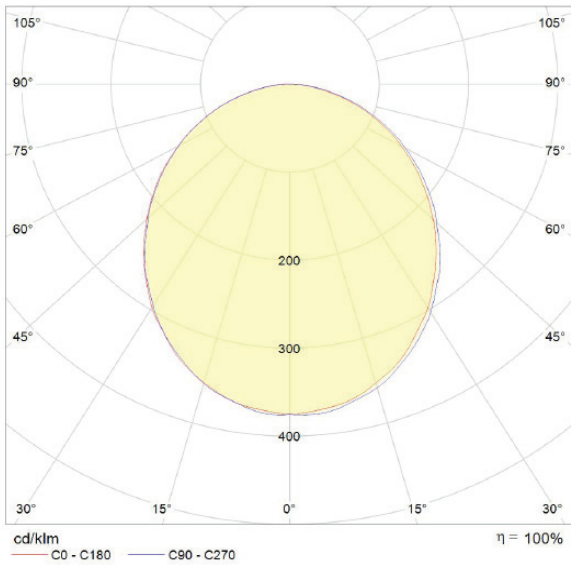
| Dimensions:        |         |
|--------------------|---------|
| Length (mm)        | 610     |
| Width (mm)         | 610     |
| Height (mm)        | 65      |
| Ope Dimension (mm) | 565x565 |
| Weight (kg)        | 14.5    |

| Lighting Data:  |            |
|-----------------|------------|
| LED Type        | Everlight  |
| Luminous Flux   | 6480lm     |
| CCT             | 4000K      |
| CRI             | >80        |
| Efficacy        | 120lm/cw   |
| Life Expectancy | >70,000hrs |
| Macadam Step    | 3          |

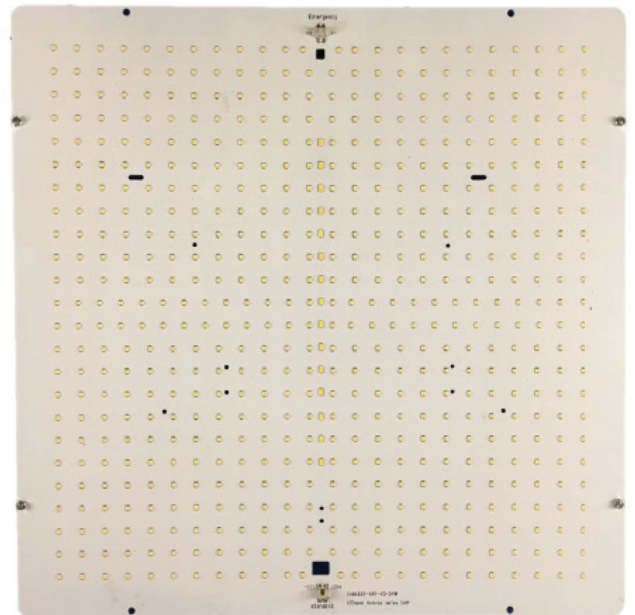
| Body / Diffuser: |                           |
|------------------|---------------------------|
| Body Material    | Sheet Steel               |
| Body Finish      | Powder coated Epoxy Paint |
| Body Colour      | RAL 9010                  |
| Diffuser         | 3mm TP (a) Polycarbonate  |
| Cable Tail Lead  | 3m PVC/PVC                |

| Technical Data: |                      |
|-----------------|----------------------|
| IP Rating       | IP65                 |
| Max T (a)       | 35                   |
| Walk-on Loading | 2.5kN/m <sup>2</sup> |
| Temp Range      | -20°C to + 40°C      |
| Gland position  | Top/Rear             |

| Options:                |                              |
|-------------------------|------------------------------|
| DALI Dimmable           | Yes, on request              |
| Emergency               | Yes, Integrated 4W LED strip |
| Self/Auto Test (Emer.)  | Yes, on request              |
| Diffuser Option         | Toughened Glass option       |
| Cable Tail Lead options | Yes, on request              |
| Gland Position Options  | Side entry options           |
| Low UV / Amber          | Yes, inc dual option         |
| Smart Lighting options  | Yes, on request              |



**LED Light Plate**



**To Specify:**

Recessed, IP65, Walk-on LED Cleanroom Luminaire with steel body, SMD LEDs, Tridonic Driver and chemical resistant polycarbonate diffuser, suitable for installation in 65mm controlled environment panel ceilings. The luminaire is 'Bottom Access' only and suitable for the highest grades of cleanroom.

**Drawings**

